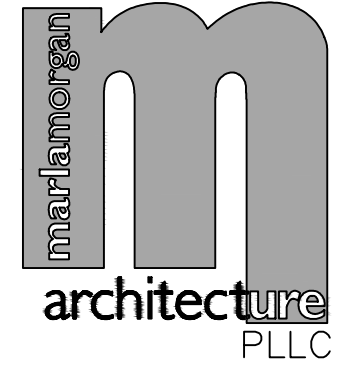


**PLAN NOTES:**

- 1 1" CN UP FROM BELOW TO SERVE SUITE #3. SEE SHEET P-2 FOR CONTINUATION OF PIPING.
- 2 3" V. UP FROM BELOW. SEE SHEET P-2 FOR CONTINUATION OF PIPING.
- 3 INSTALL WATER HEATER ON FLOOR COMPLETE WITH DRAIN PAN. PIPE DRAIN PAN TO FLOOR DRAIN WITH DOWNTURNED 90° ELBOW AND AIR GAP.
- 4 DROP 3" ROOF DRAIN AND 3" ROOF OVERFLOW DRAIN PIPING DOWN IN WALL. SEE SHEET P-1 FOR CONTINUATION OF PIPING.
- 5 INSTALL 2 PSI TO OZ REGULATOR ON 3/4" GAS LINE SERVING ROOFTOP UNIT SIZED FOR ACTUAL BTU LOAD OF UNIT SUPPLIED. CONNECT TO ROOFTOP UNIT WITH 3/4" OZ. GAS LINE COMPLETE WITH SHUT-OFF VALVE, DIRT LEG AND FLEXIBLE CONNECTION. SEE DETAIL ON SHEET P-4.

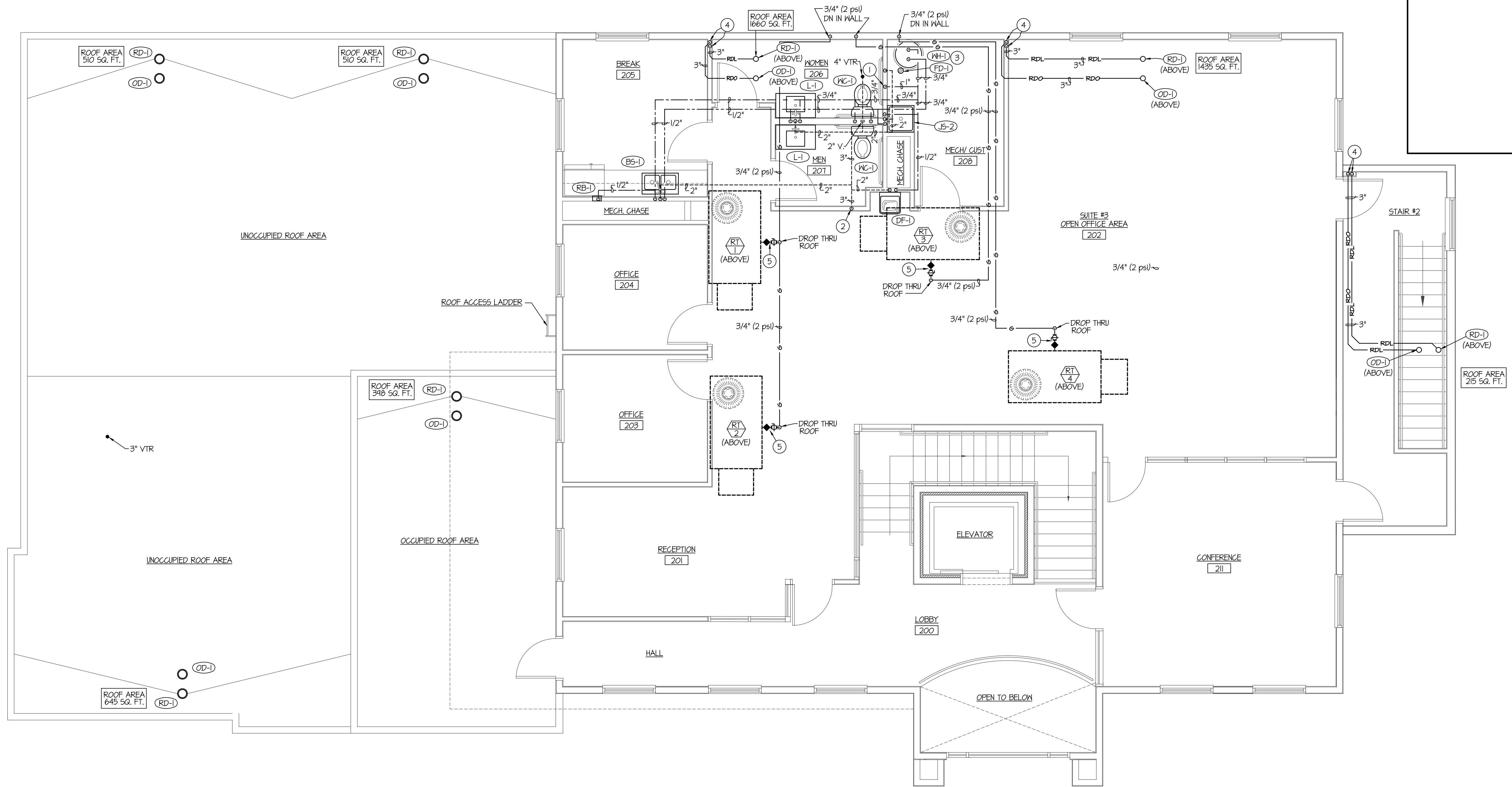
LICENSED ARCHITECT  
AR-2650  
MARLA R. MORGAN  
STATE OF IDAHO



MARLA MORGAN, Architect  
Ph: 208.270.2244  
E-MAIL: morganmrm@cableone.net

OWNER: **Dr. Deirdre Conway**  
**IDAHO FERTILITY CENTER**  
535 West Sunnyside Road Idaho Falls, ID 83402

SHEET CONTENTS  
**SECOND FLOOR PLUMBING PLAN**



**SECOND FLOOR PLUMBING PLAN**  
SCALE: 1/4" = 1'-0"  
NORTH

ORIGINAL DRAWING SIGNED BY: DWAYNE C. SUDWEEKS  
DATE ORIGINAL SIGNED: FEB. 26, 2019  
ORIGINAL ON FILE AT ENGINEERED SYSTEMS ASSOCIATES  
1355 EAST CENTER, POCATELLO, IDAHO 83201

PROFESSIONAL ENGINEER  
REGISTERED  
5762  
STATE OF IDAHO  
DWAYNE C. SUDWEEKS

**Engineered Systems Associates**  
1355 EAST CENTER  
POCATELLO, IDAHO 83201  
PHONE: (208) 233-0501  
FAX: (208) 233-0529  
EMAIL: eso@engsystems.com  
ESA JOB NUMBER: 18097

REVISIONS	NO	DATE	DESCRIPTION

SHEET NUMBER  
**P-3 OF 4**